

Nr. 5047

Duck foot bend System 2000

with 2" internal thread



Standards

System 2000:

- Suitable for PE pipes 80/100, EN 12201, DIN 8074
- For PVC pipes according to EN ISO 1452-2
- For thin-walled PE pipes (\geq SDR 21) and for vacuum pipelines, the use of a support liner is required
- restraint acc. to DIN 8076 T1/T3
- with protecting caps of recycled PE or PE foil packing to prevent ingress of dirt & dust during storage acc. to EN 12351 and EN 805

Construction features

System 2000:

- Using a lip seal ring for sealing the pipe allows for easier insertion of the pipe into the System 2000 socket
- The pipe restraining system is required for pushing the pipe into the seal and chamfer with an appropriate tool
- Specially developed for repairs or expansion of existing networks using plastic pipes
- Easy assembly and disassembly (superior mechanical connection, no welding, minimal assembly and disassembly forces)

Learn more about reliable [System 2000](#) pipe connections in our Hawle Knowledge blog.



Nr. 5047

Duck foot bend System 2000

with 2" internal thread

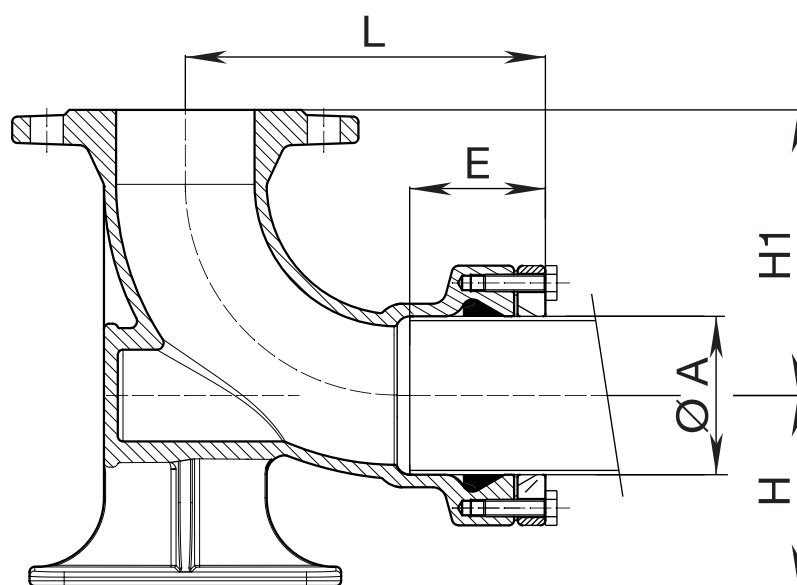
Materials

Body lock ring	<ul style="list-style-type: none">• Ductile iron: EN-GJS-420-15 according to EN 1563• Epoxy powder coated inside and outside: According to DIN 30677-T2 in due consideration of the RAL-GZ 662 quality and testing requirements:<ul style="list-style-type: none">- coating thickness: min. 250 µm- zero porosity: min. 3000 V spark test- adhesion: min. 16 N/mm²
Grip ring	Brass
Hexagonal bolts	Stainless steel, minimum quality A4
Lip seal ring	Elastomer, EPDM acc. to EN 681-1
Spacer bushes	PE

Nr. 5047

Duck foot bend System 2000

with 2" internal thread



DN	PN	Weight
80/75 (+2"IG)	PN16	12.21
80/90 (+2"IG)	PN16	12.7
80/110 (+2"IG)	PN16	14.46

All illustrations, technical data, dimensions (in mm) and weights (all weights specified in kg) are non-binding. Subject to changes and printing errors