

PRODUCT DATA SHEET

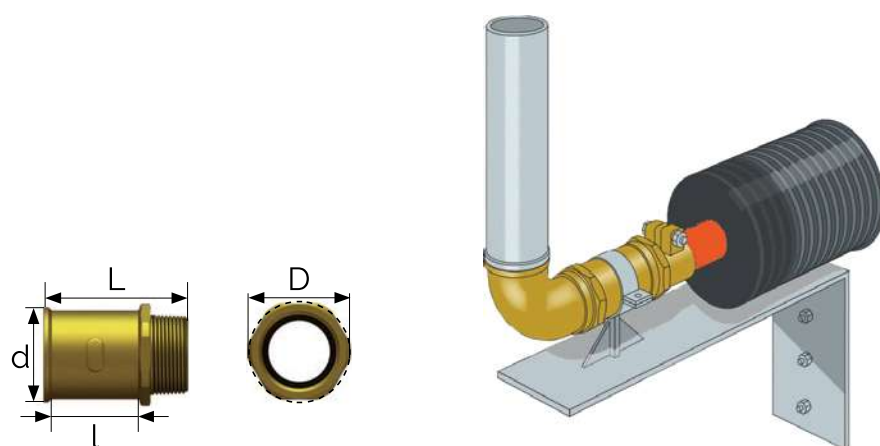
Fix points

The installation of adequately anchored fix points at the extremities of the pre-insulated piping system (typically at wall penetrations) is mandatory to secure the connected piping against the potential impact of thermal expansion/retraction and longitudinal reversion of the PE-Xa medium pipe(s).

Failing to do so involves a genuine damage risk and automatically voids the system warranty.



- Pressure rating: PN 16
- Material: DZR brass in accordance with DWD 98/83/EC
- Thread: conical ISO 7-1



Fix points

	Thread M + F	d	L	l	D	Weight
Art. No.	[inch]	[mm]	[mm]	[mm]	[mm]	[kg]
FPO.75	¾"	32	59	27	32	0.2
FP1	1"	45	61	27	45	0.3
FP1.25	1 ¼"	53	88	52	50	0.5
FP1.5	1 ½"	58	88	52	58	0.6
FP2	2"	70	98	55	70	0.8
FP2.5	2 ½"	86	98	55	85	1.0
FP3	3"	100	140	90	98	1.7
FP4	4"	124	145	90	124	2.5